

PMBA ROADMAP

Plan I: Completion of Knewton Alta in Summer

Quarter 1

Core:	
Core:	
Core:	

12 Units

Quarter 2

Required	MGT 298i: Fieldwork in Management (A)
Core:	
Core:	
Core:	

14 Units

Quarter 3

Core:	
Core:	
Core:	

12 Units

Quarter 4

Required	MGT 298i: Fieldwork in Management (B)
Elective:	
Elective:	
Elective:	

14 Units

Quarter 5

Elective:	
Elective:	
Elective:	
Elective:	

16 Units

Quarter 6

Required:	MGT 238: Management Synthesis
Elective:	
Elective:	

12 Units



PMBA ROADMAP

Plan II: No Completion of Knewton Alta in Summer

Quarter 1

Prerequisite: MGT 403: Review Quant. Methods for Management
Core:
Core:
12 Units

Quarter 2

Required: MGT 298i: Fieldwork in Management (A)
Core:
Core:
Core:
14 Units

Quarter 3

Core:
Core:
Core:
12 Units

Quarter 4

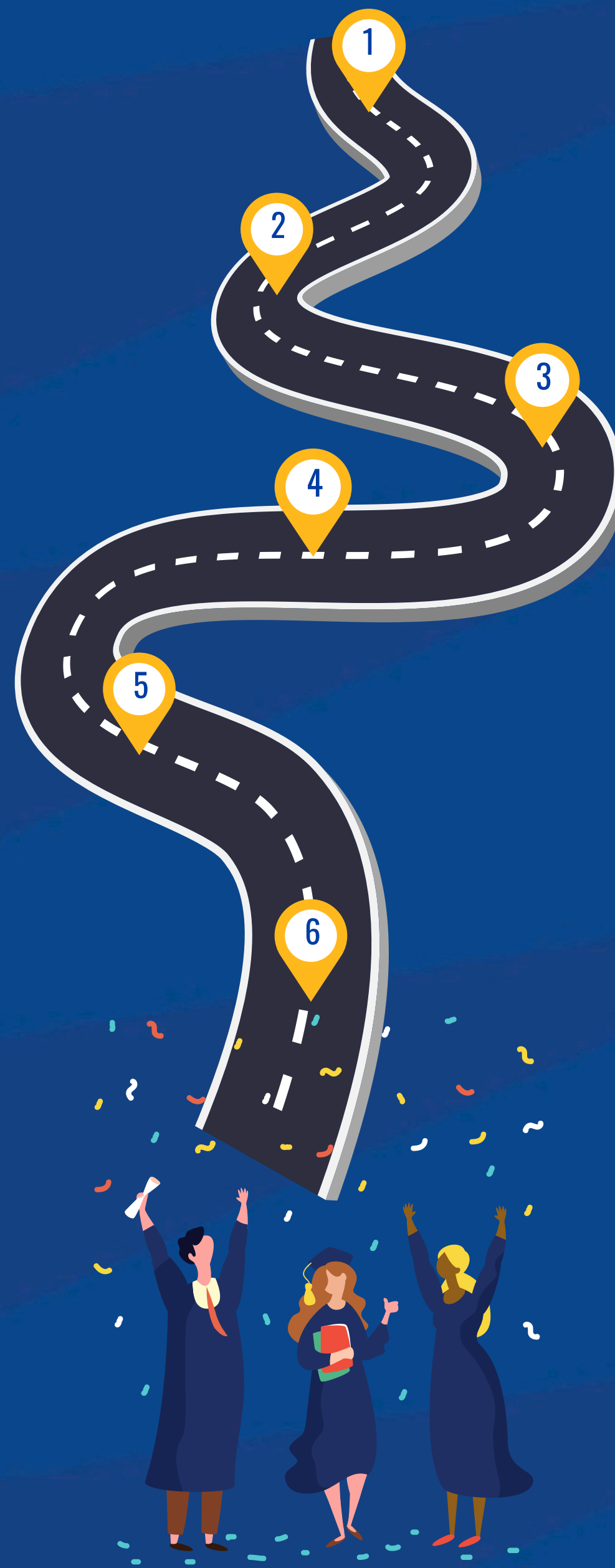
Required: MGT 298i: Fieldwork in Management (B)
Core:
Elective:
Elective:
14 Units

Quarter 5

Elective:
Elective:
Elective:
Elective:
16 Units

Quarter 6

Required: MGT 238: Management Synthesis
Elective:
Elective:
Elective:
16 Units



PMBA Worksheet

Course Number	Course Name	Units	Grade	Quarter
<u>Pre-Req.</u>	<u>4 Units if No Knewton Alta</u>			
MGT 403	Review of Quantitative Methods for Management (Fall Only)	4		
<u>Core Courses</u>	<u>36 Units Required</u>			
MGT 200	Organizational Behavior and Theory	4		
MGT 201	Quantitative Analysis	4		
MGT 202	Financial Management	4		
MGT 203	Economics for Management	4		
MGT 205	Information Systems	4		
MGT 207	Operations Management	4		
MGT 209	Marketing Management	4		
MGT 211	Financial Accounting	4		
MGT 235	Strategic Management	4		
<u>Capstone</u>	<u>4 Units Required</u>			
MGT 238	Management Synthesis	4		
<u>Internship</u>	<u>4 Units Required</u>			
MGT 298i	Fieldwork in Management (A)	4		
MGT 298i	Fieldwork in Management (B)	4		
<u>Electives</u>	<u>36 Units Required</u>			
		4		
		4		
		4		
		4		
		4		
		4		
		4		
		4		
		4		
		4		

Students must maintain a minimum cumulative GPA of 3.0 during the PMBA program.